



South Hill Park, Hampstead NW3
£4,495,000 Freehold



South Hill Park, Hampstead NW3

A spacious, well-presented, 6 bedroom & 3 reception room, family home (3,170 Sq Ft - 294.5 Sq M), with high ceilings and a stunning master bedroom suite with balcony and views towards the City.

The semi-detached Victorian house offers the advantage of a lower ground floor with its own patio and separate entrance, ideal for an au pair or working from home.

Master bedroom suite including bathroom and dressing room • 5 further bedrooms • 3 reception rooms/dining room/cinema room • kitchen • family bathroom • shower room • guest WC • utility room • garden & decked terrace • separate lower ground floor entrance • residents permit parking • EPC Rating D

The sought-after South Hill Park Conservation Area is a popular family neighbourhood which has the advantage of having no through-traffic and is surrounded by Hampstead Heath. South End Green is a short stroll, with an excellent mix of cafes, gastro pubs, neighbourhood restaurants and shops, including delicatessens and Marks & Spencer, while Hampstead Village is approximately a 10 minute stroll.

Hampstead Heath (London Overground Station) is less than 5 minute walk. The nearest London Underground station is Belsize Park (Northern Line) is approximately 0.7 miles. There are also frequent bus and night bus services from South End Green. Resident permit parking is available.

£4,495,000 Freehold

Telephone 020 7794 7794





















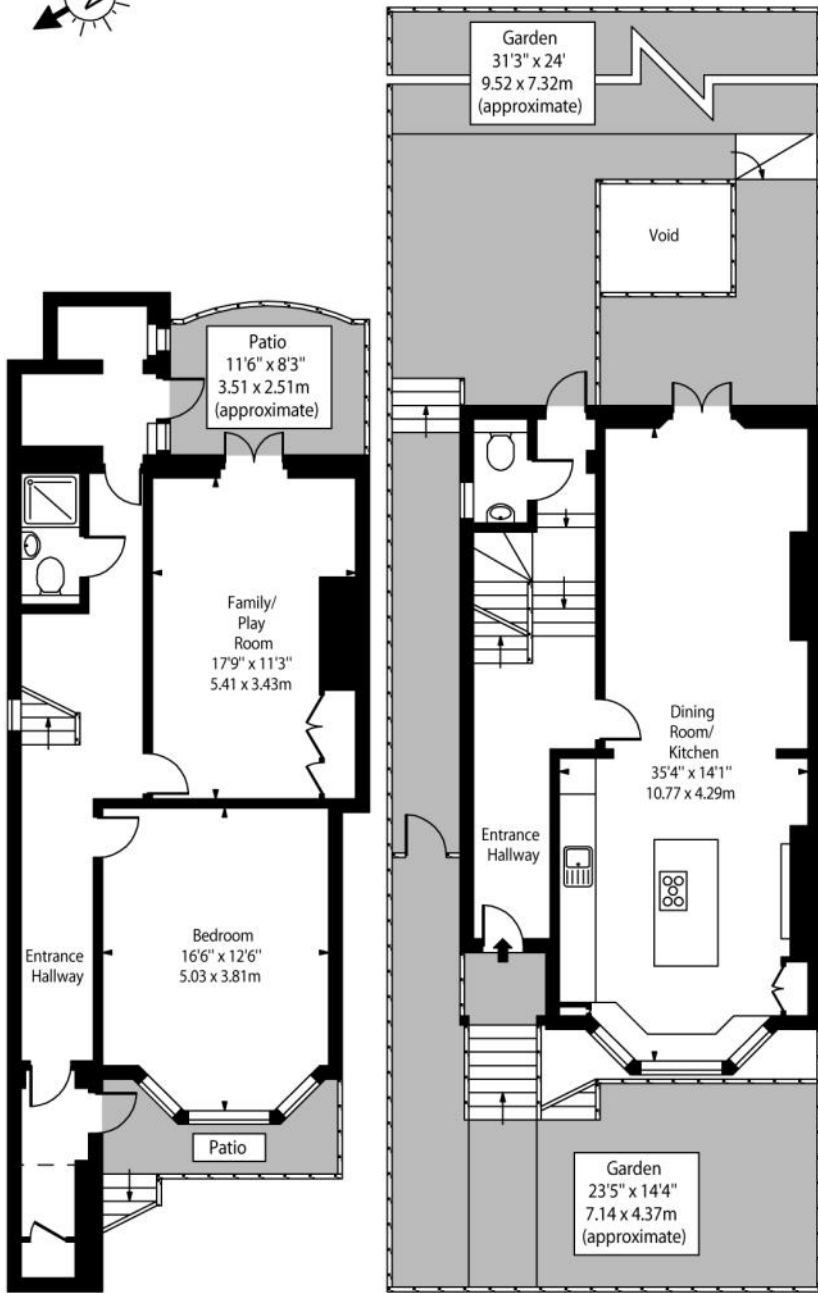






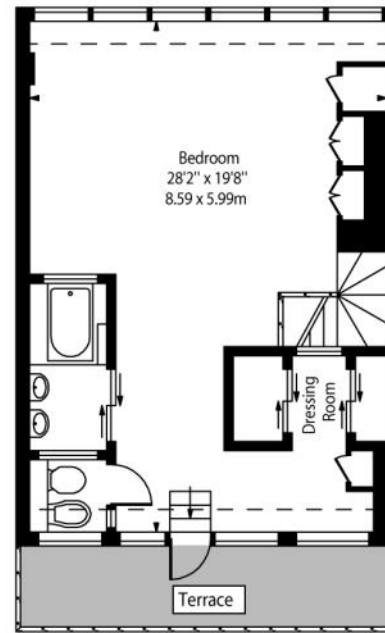




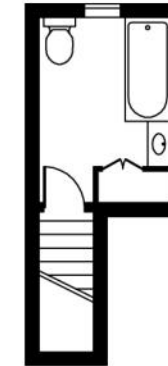


Lower Ground Floor

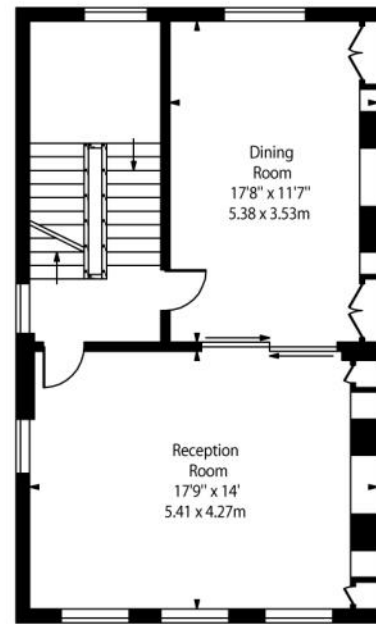
Ground Floor



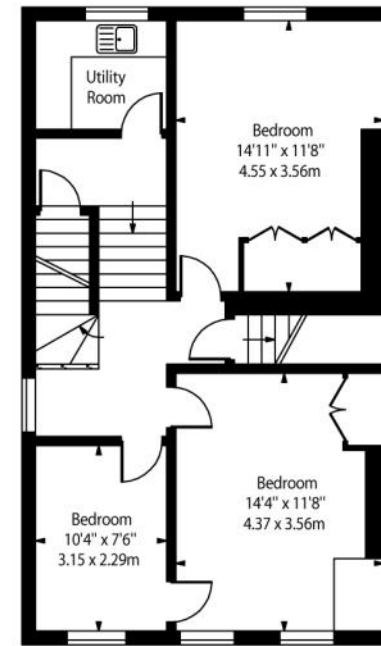
Third Floor



Second Floor



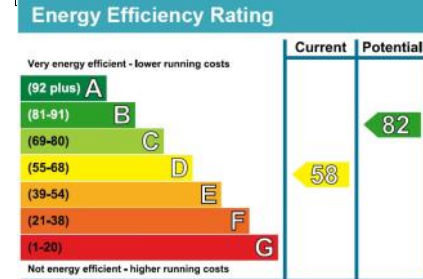
First Floor



Second Floor

Approx. Gross Internal Area
3,170 Sq Ft - 294.5 Sq M
Excluding restricted heights

For Illustration Purposes Only - Not to Scale
This floor plan should be used as a general outline for guidance only. Any intending purchaser or lessee should satisfy themselves by inspection, searches, enquiries and full survey as to the correctness of each statement. Any areas, measurements or distances quoted are approximate and should not be used to value a property or be the basis of any sale or let.



Telephone 020 7794 7794

